

MARCH 2021 - PRESENTATION

TSX.V: GEM Frankfurt: BR2P (WKN: A2QENP) OTC: CZSVF

Green⁺Battery
minerals inc



Plugged Into High Tech Minerals

Reduce | Reuse | Recharge



6

12.011

C

$[\text{He}]2s^22p^2$
carbon

Forward Looking Statements – DISCLAIMER

Except for historical information, this presentation may contain certain “forward-looking” statements and information relating to Green Battery Minerals Inc. that are based on the beliefs of Green Battery Minerals Inc. management, as well as assumptions made by and information currently available to Green Battery Minerals Inc. management. Such statements reflect the current risks, uncertainties and assumptions related to certain factors including but not limited to, without limitations, exploration and development risks, expenditure and financing requirements, title matters, operating hazards, metal prices, political and economic factors, competitive factors, general economic conditions, relationships with vendors and strategic partners, governmental regulation and supervision, seasonality, technological change, industry practices, and one-time events. Should any one or more risks or uncertainties materialize or change, or should any underlying assumptions prove incorrect, actual results and forward-looking statements may vary materially from those described herein. Green Battery Minerals Inc. does not assume the obligation to update any forward-looking statement. The factors that could cause actual results to differ materially include, but are not limited to, the following: general economic conditions; changes in financial markets; the impact of exchange rates; political conditions and developments in countries in which the Company operates; changes in the supply, demand and pricing of the metal commodities which the Company mines or hopes to find and successfully mine; changes in regulatory requirements impacting the Company’s operations; the ability to properly and efficiently staff the Company’s operations; the sufficiency of current working capital and the estimated cost and availability of funding for the continued exploration and development of the Company’s exploration properties. This list is not exhaustive and these and other factors should be considered carefully, and readers should not place undue reliance on the Company’s forward-looking statements. As a result of the foregoing and other factors, no assurance can be given as to any such future results, levels of activity or achievements and neither the Company nor any other person assumes responsibility for the accuracy and completeness of these forward-looking statements. The Mason Graphite NI 43-101 mineral resource estimate and other information was sourced from the Mason Graphite news releases. The Qualified Person did not verify the information contained within the Mason Graphite news release and the mineralization on the Mason Graphite property is not necessarily indicative of the mineralization on the Company’s property.

Employees are a **Company's Competitive Advantage.**

Our team has found, built and operated mines.
Not just one... but over **15!**

Green Battery Minerals Inc is an ESG Committed Company

The **GREEN in our name and logo represents a choice in the way we do business. The over well-bing and respect for the environment and people comes first.**

We are committed to practicing ESG.

ENVIRONMENT

- Climate Stability
- Waste Management
- Innovation
- Natural Resources

SOCIAL

- Human Capital
- Value Chain - Ethical Supply Chain
- Community
- Diversity

GOVERNANCE

- Risk Management
- Anti-Bribery & Corruption
- Corp. Governance
- Transparency

“Our cells should be called Nickel-Graphite, because primarily the cathode is nickel and the anode side is graphite with silicon oxide... [there’s] a little bit of lithium in there, but it’s like the salt on the salad,”

Elon Musk – Tesla CEO

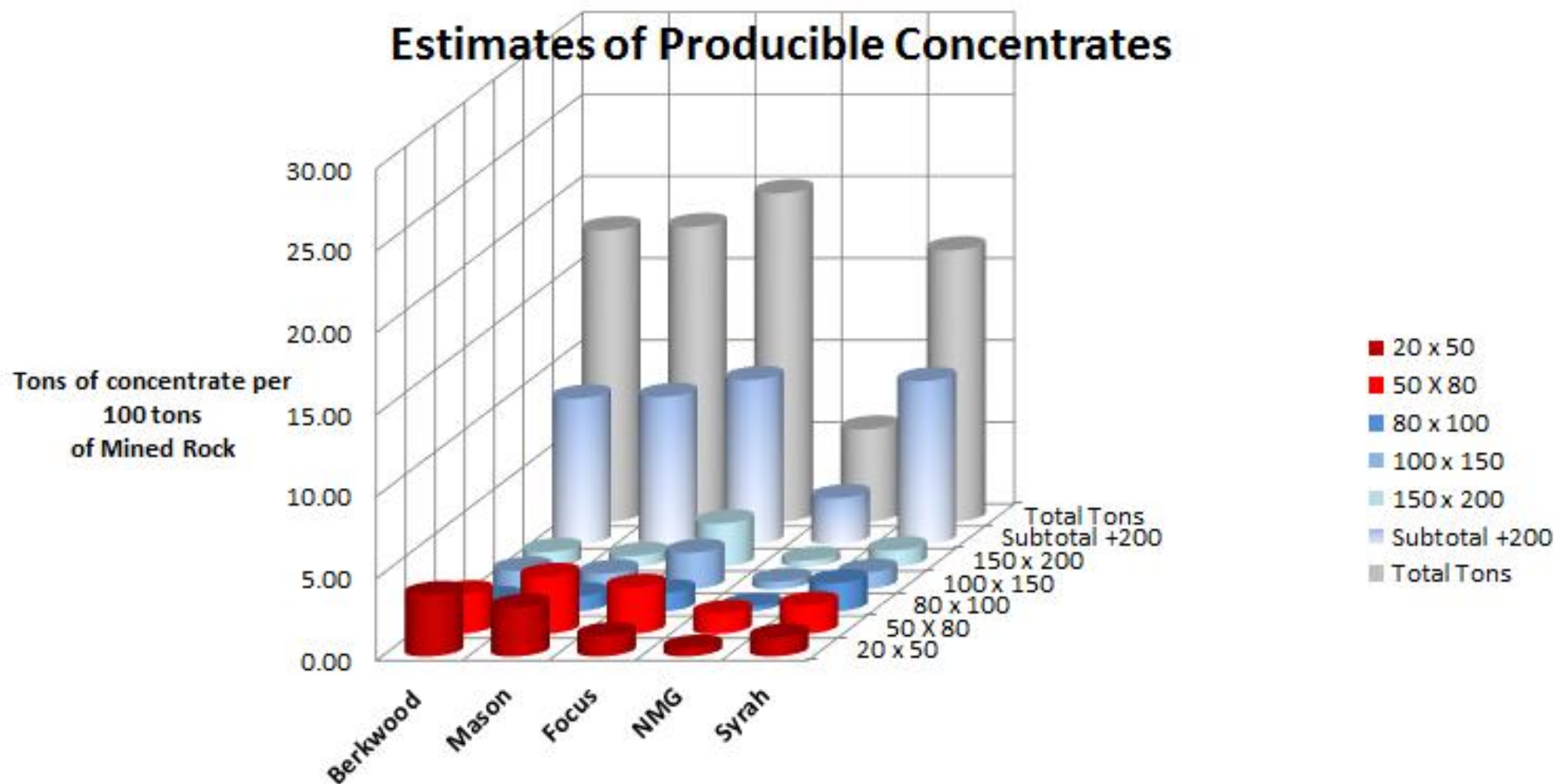
CAPITAL STRUCTURE

Shares outstanding	37,591,340
Warrants outstanding	18,202,265
Options outstanding	<u>1,230,000</u>
Fully diluted shares	57,023,605

POTENTIAL UPSIDE MARKET CAP COMPARISON

	MASON GRAPHITE	NOUVEAU MONDE GRAPHITE	GREEN BATTERY MINERALS
Outstanding shares	136,227,585	369,163,932	37,591,340
Share Price 2021-02	\$ 1.00	\$ 2.25	\$ 0.40
Total Market Cap.	\$ 136,227,585	\$ 830,618,847	\$ 15,035,535

Estimates of Producing Concentrates



FROM NI 43-101* On ZONE 1 ONLY

*See News Release: Aug 19th 2019: Berkwood files robust pit constrained mineral resources at its Lac Guéret South Project on SEDAR

<u>D</u> Mineral Resource Category	Current Resource 43-101 <u>Resource</u> (June 2019) ⁸			Cut off (% Cgr) ³
	Tonnage (Mt) ^{5,7}	Grade (% Cgr) ³	Cgr (t) ⁶	
Indicated	1,76	17.00	299,200	6.81%
Inferred ⁴	1,53	16.4	250,200	6.81%

Characteristics	Main	Layer 01
Length (m) ¹	290	340
<u>Azimuth</u> (°)	80	42
Maximum <u>width</u> (m)	130	35
Surface Area (km ²)	0.13	

Parameters	Values
Operating Cost	92 \$/t
<u>Recovery</u>	90%
<u>Selling Price</u> Cg	1,153 \$/t

Green Battery has made a Graphite Discovery

- High-Grade Graphite - 17% average grade.
- 70% -80% of our resource is Large to Jumbo flake size.
- Metallurgical Tests Yield 97.8% Graphite.
- Easily Purified to 99.95% using Standard Alkaline process. (Environmentally friendlier).
- Quebec Location - One of the best jurisdictions to mine in the world.
- Infrastructure - Dams, Road Access, Ports, Railway, and Workforce close by.
- 4 very successful drill programs.
- Year-round access.
- On surface resource - open pit.
- Reclamation cost low.
- 11 other outcrop locations on the property.
- Large to Jumbo flake size, will make spherical graphite - which is used in the anode of batteries.
- Easily expandable for industrial uses.
- Short fuse to production using a simple mining process.
- De-risked compared to other graphite projects.
- Low cost; both cap and operating.
- 550,000 Tonnes of graphite and growing. (43-101 Resource Estimate)
- Carbon6 off-take agreement.

LOCATION – NEXT TO MINE

“The best place to look for a new mine is in the shadow of head frames.”

Where there is one mine there is often others!

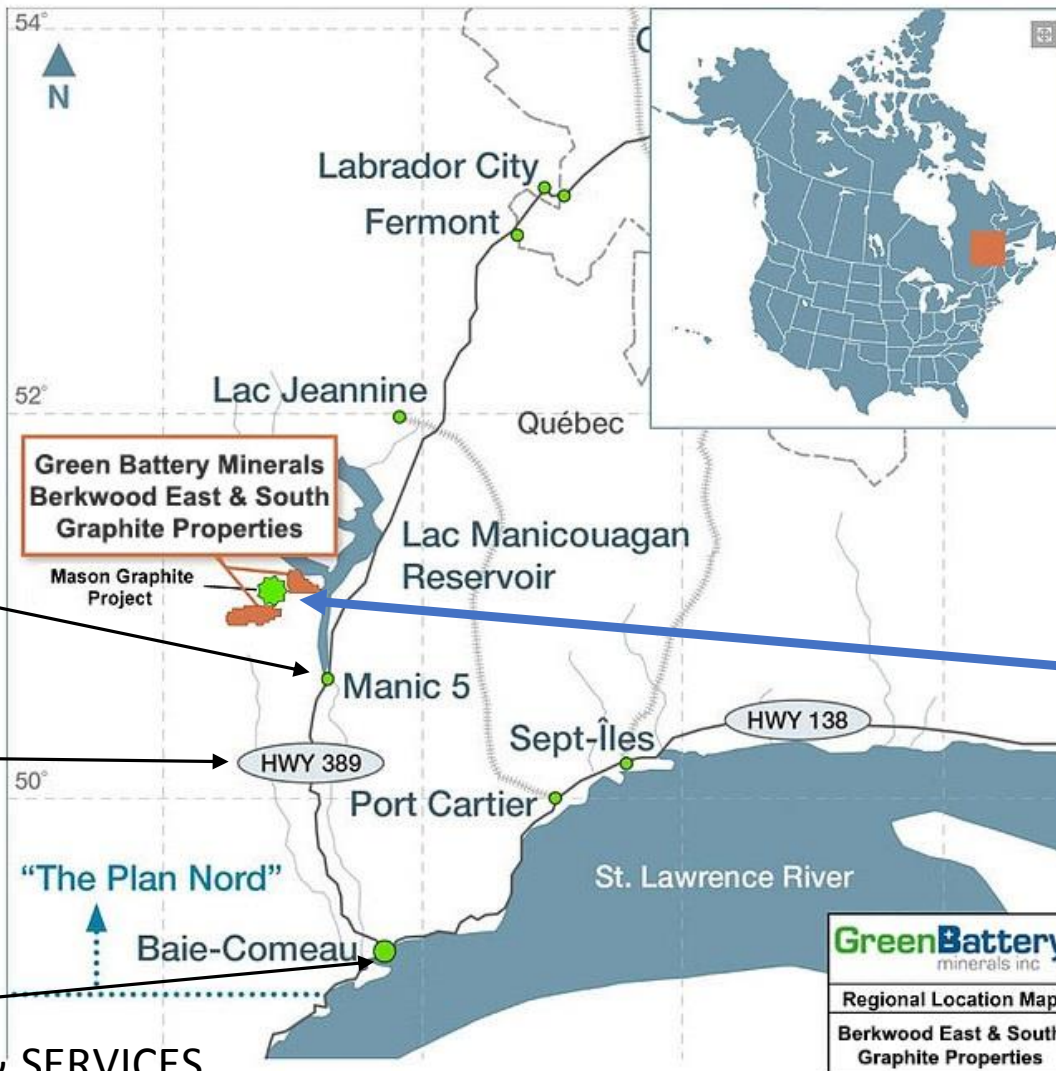
HYDROPOWER

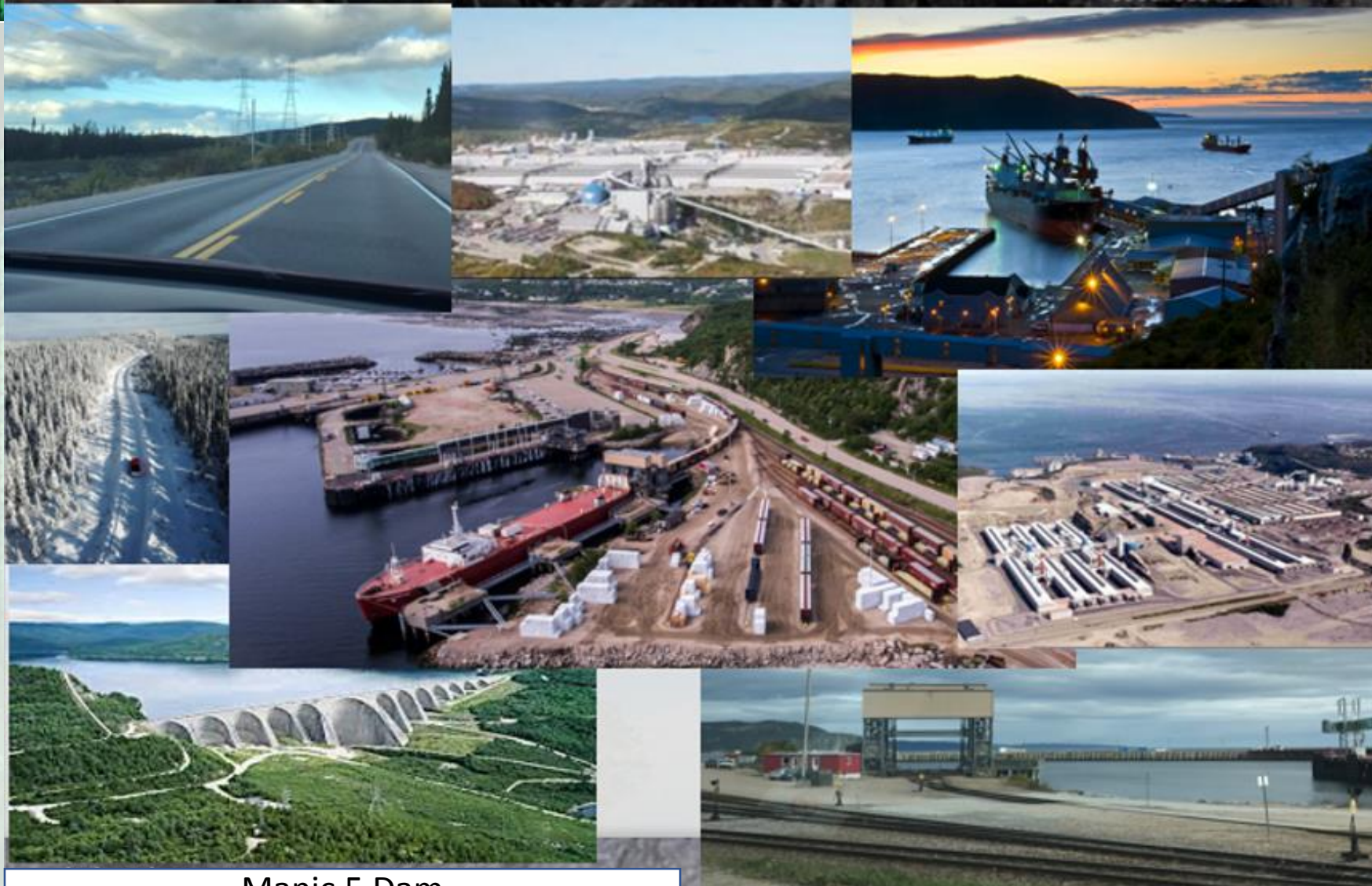
ROAD

OCEAN PORT
RAILWAY

WORK FORCE

HEAVY INDUSTRIES & SERVICES





Manic 5 Dam

LOCATION – NEXT TO MINE

1. Green Battery Minerals is now one of the industry leaders regarding property ownership in the area.
2. Green Battery Minerals *Berkwood project* is adjacent to Mason Graphite (TSX:LLG) and their massive +10m contained tonnes.
Mason Graphite: Paved the way for Green Battery Minerals Inc.
 1. Green Battery Minerals property location benefits from advanced roads, power, workforce, a port, and has a proposed graphite plant in place.
 2. Committed to ESG

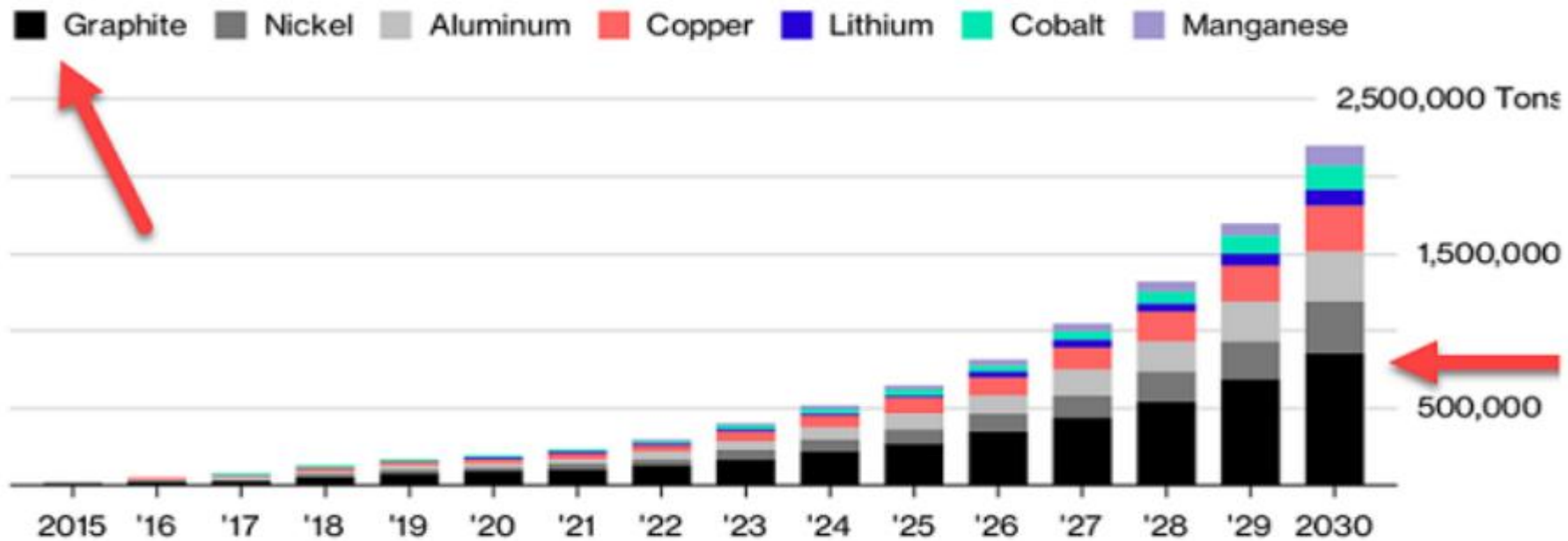
WE ARE IN A GROWTH MARKET

DEMAND FOR GRAPHITE IS GROWING

- EV DEMAND - 10 countries have mandated EV cars by 2030 to 2040
- SOLAR AND WIND FARMS - storing energy to sell at peak times
- HOME – batteries to store energy from solar roofs.

Metal Winners

Graphite demand is forecast to soar as electric vehicle market expands



Source: Bloomberg New Energy Finance

Bloomberg

PRICE OF GRAPHITE

BERKWOOD HAS LARGE AND JUMBO MESH (FLAKE) SIZE AND HIGH GRADE GRAPHITE

Graphite Product	Carbon Content %	Mesh Size	Graphite Size (micron)	Approximate Price US\$/t*
Jumbo Flake	94 – 97%	+48	+48	\$2,000
Large Flake	94 – 97%	-48 to +80	-48 to +80	\$1,300
Medium Flake	94 – 97%	-80 to +100	-80 to +100	\$1,100
Fine Flake	94 – 97%	-100 to +200	-100 to +200	\$750
Amorphous	80 – 85%	-200	-200	\$450
Synthetic	99.95%			+\$7,000

Source: Various

WE HAVE LARGE FLAKE AND HIGH GRADE GRAPHITE - THE TYPE IN DEMAND.

97.8% grade from metallurgical testing

Classification	Size Fraction (US Mesh)	Weight %	Cgr (%)
Very Coarse	20 x 50	39.5	97.6
Coarse	50 x 100	50.0	98.0
Fine	100 x 200	10.4	98.0
	Total:	100.0	97.8

See News Release Feb, 7th 2019: **Berkwood Metallurgical Tests Yield 97.8% Graphite in Concentrate Grade**

Average Distribution of Graphite

Size Range	Medium Cgr (6.81% - 15% grade)	High Cgr (15% - 35+% grade)
20 to 50 Mesh (Jumbo Flake)	51.30%	47.10%
50 to 100 Mesh (Large Flake)	28.70%	21.50%
Less than 100 Mesh (Other)	20.10%	31.40%

See News Release march 8th 2018: **Berkwood Announces Large Flake Characterization results at Lac Gueret Project Quebec.**



The main findings of ProGraphite are:

- The material is easily purified to 99.95% by the standard alkaline process.
- The material is very suitable for the production of expandable graphite, having achieved densities of 380 and 390 ml per gram.
- Size distribution of the graphite in the concentrate shows a coarse flake size, above average.
- Graphitic carbon grade of the concentrates produced is high at 97% Cgr.

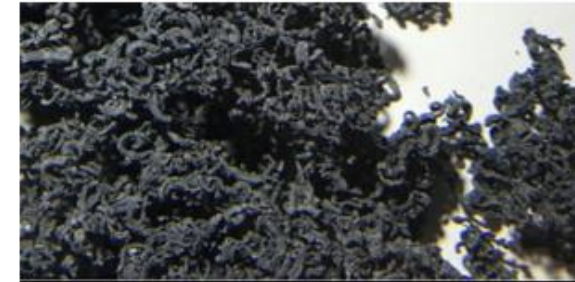


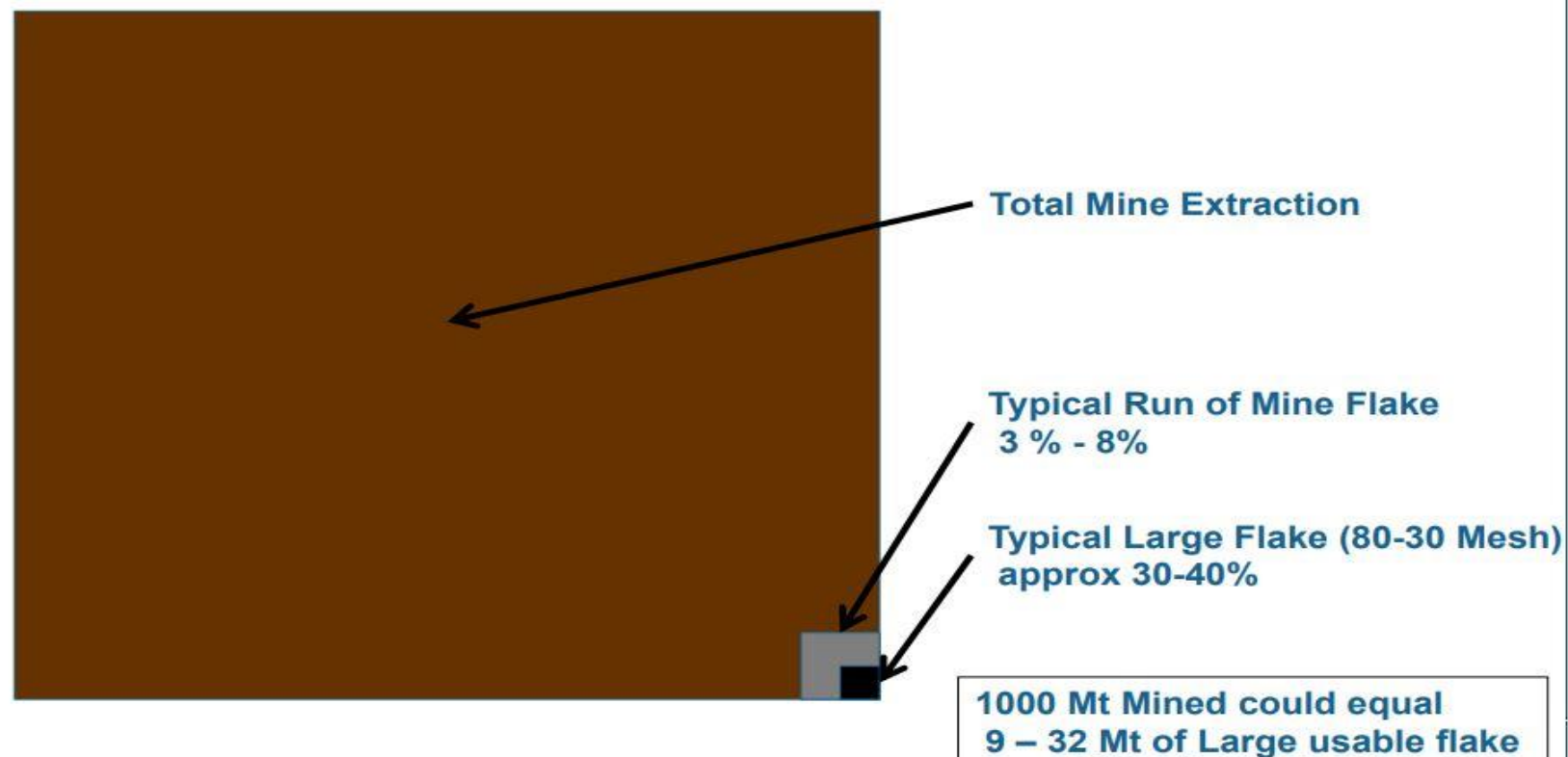
Image: Berkwood's Expanded Graphite.

See News Release, Aug 27th 2019: [Berkwood Reports Excellent Results from Purification \(99.95%\) and Expandable Graphite Tests](#)

ProGraphite offers professional services for companies involved in natural graphite

GRAPHITE SCARCITY

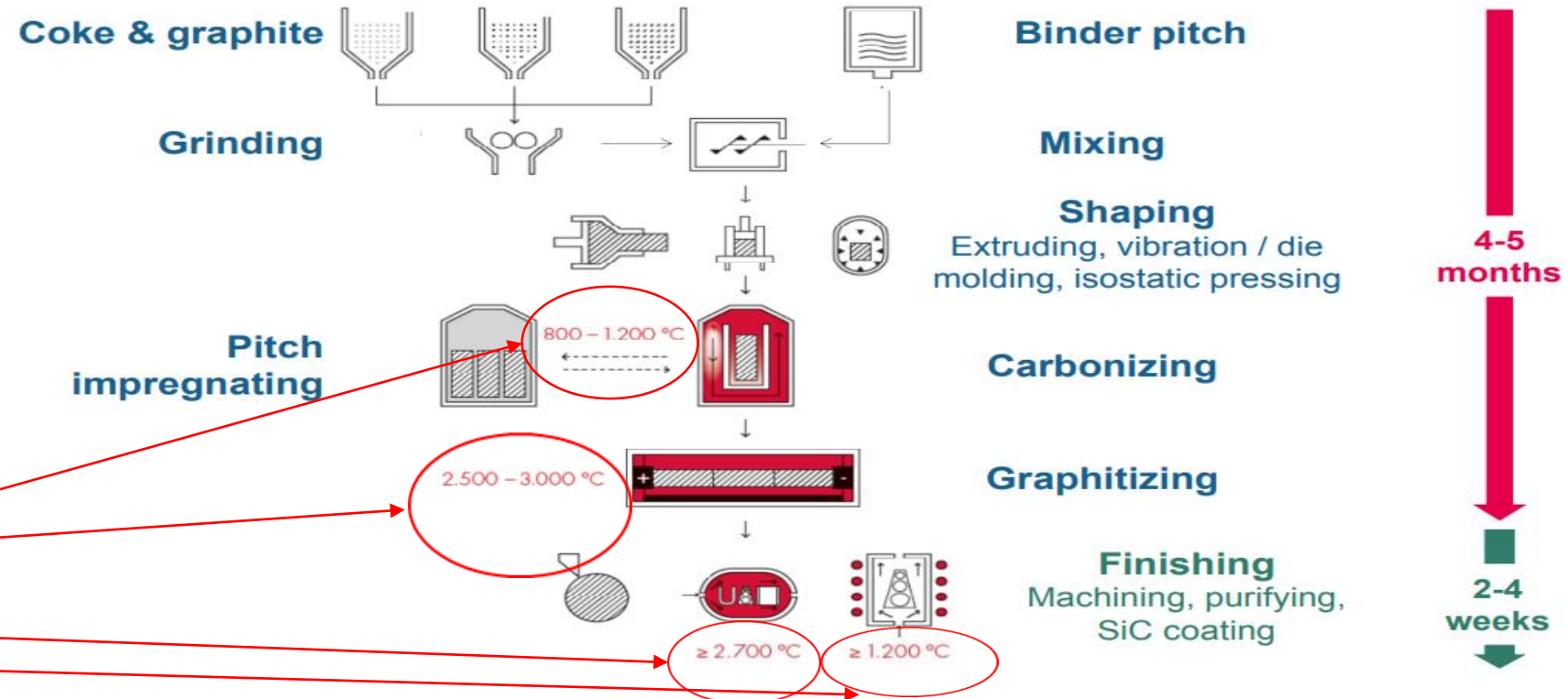
The Scarcity of Natural Graphite



THE STEPS TO MANUFACTURING SYNTHETIC GRAPHITE

Synthetic graphite manufacturing is complex and requires multiple steps for a total four to six months production time

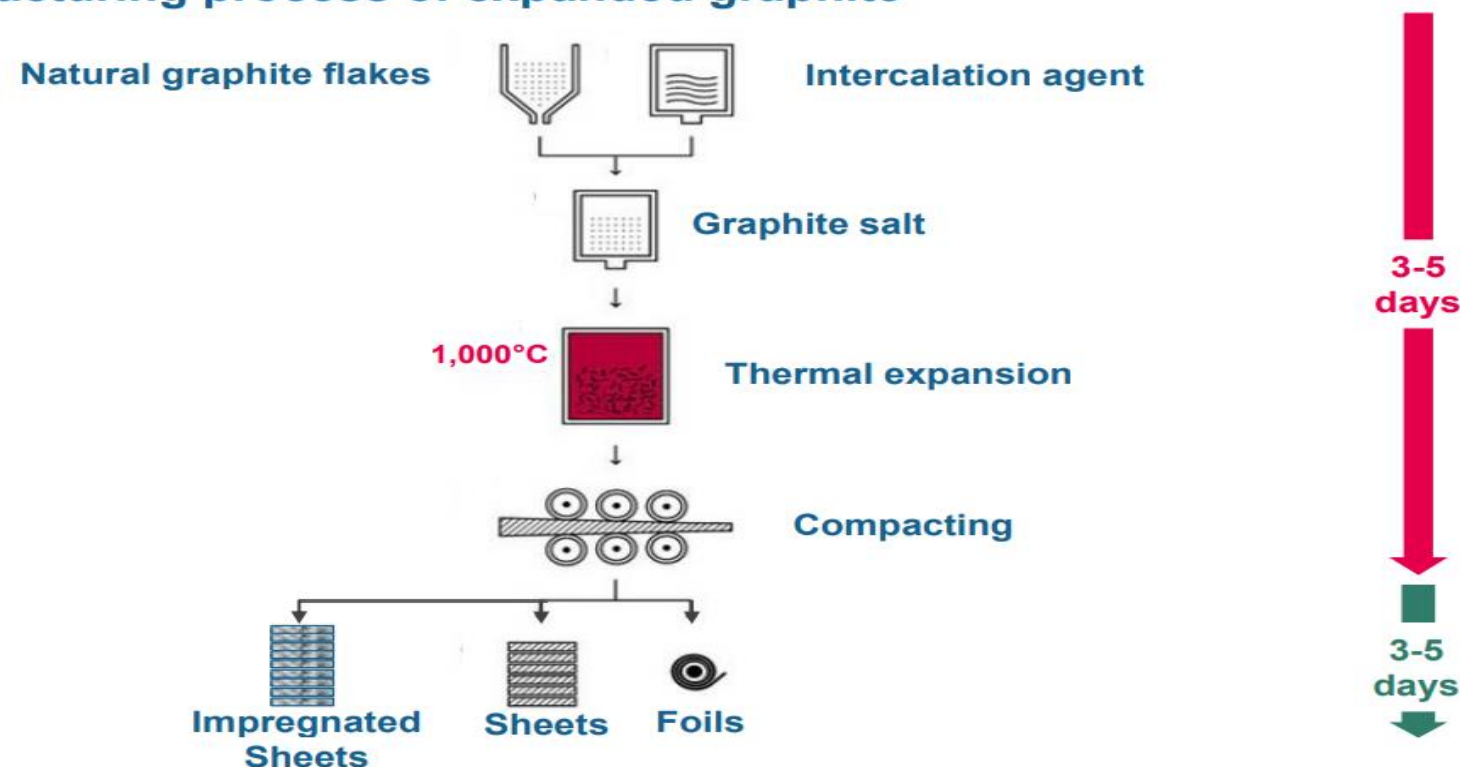
Manufacturing process of synthetic granhite



These process take a lot of heat, cost, and time.

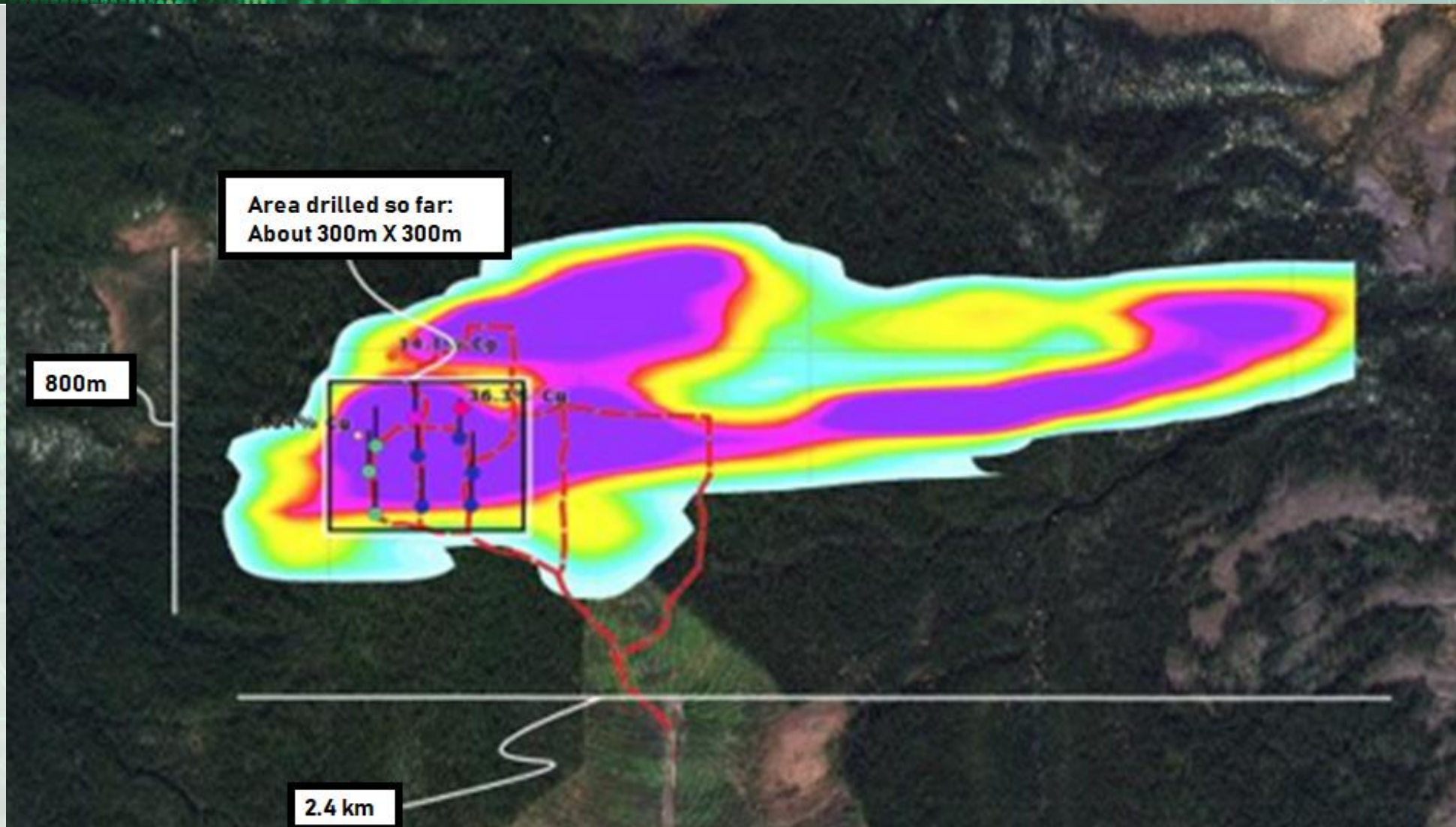
The unique properties of natural graphite are captured in expanded graphite foils

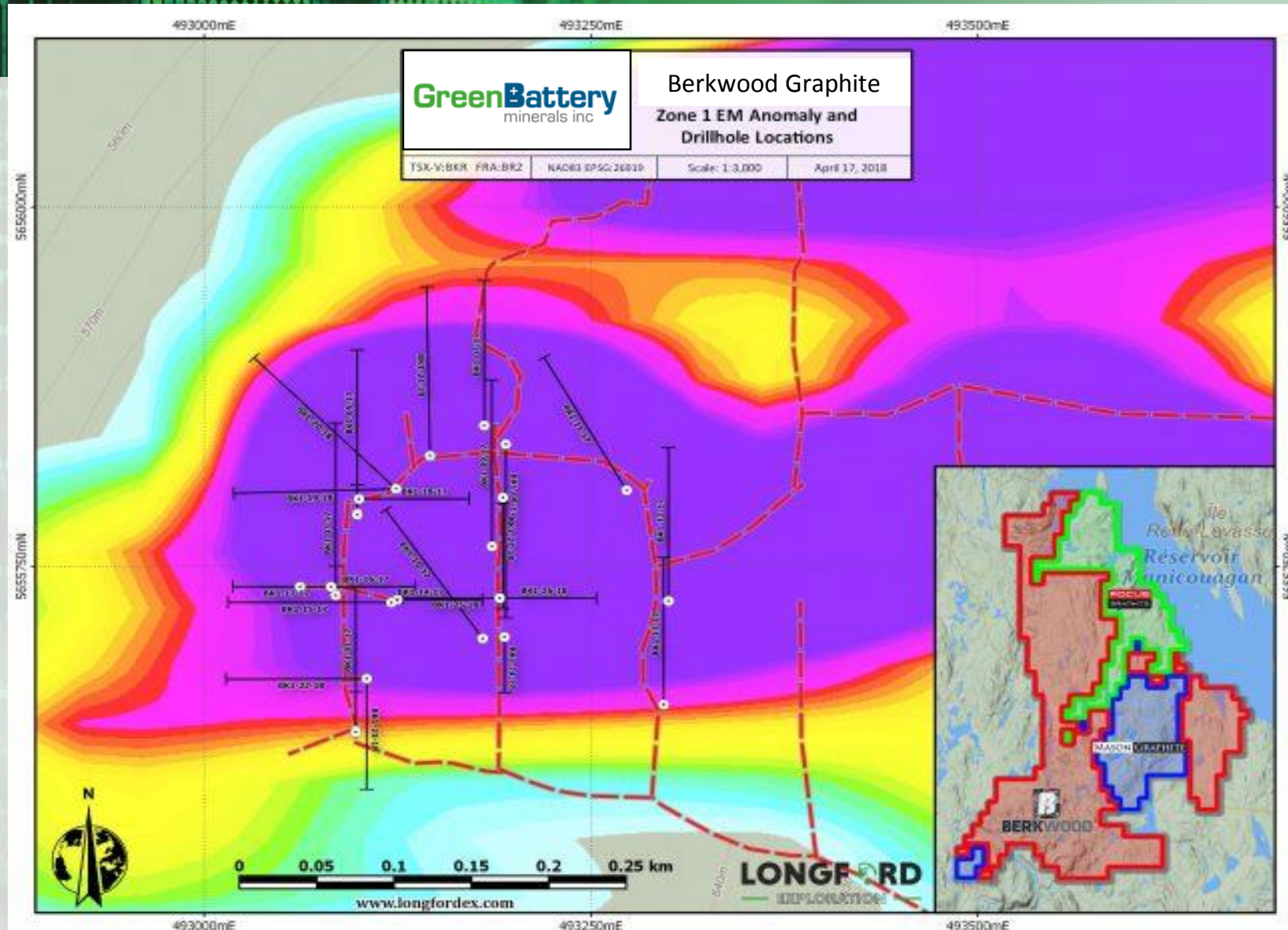
Manufacturing process of expanded graphite



ZONE 1 – AIRBORNE EM ANOMALY

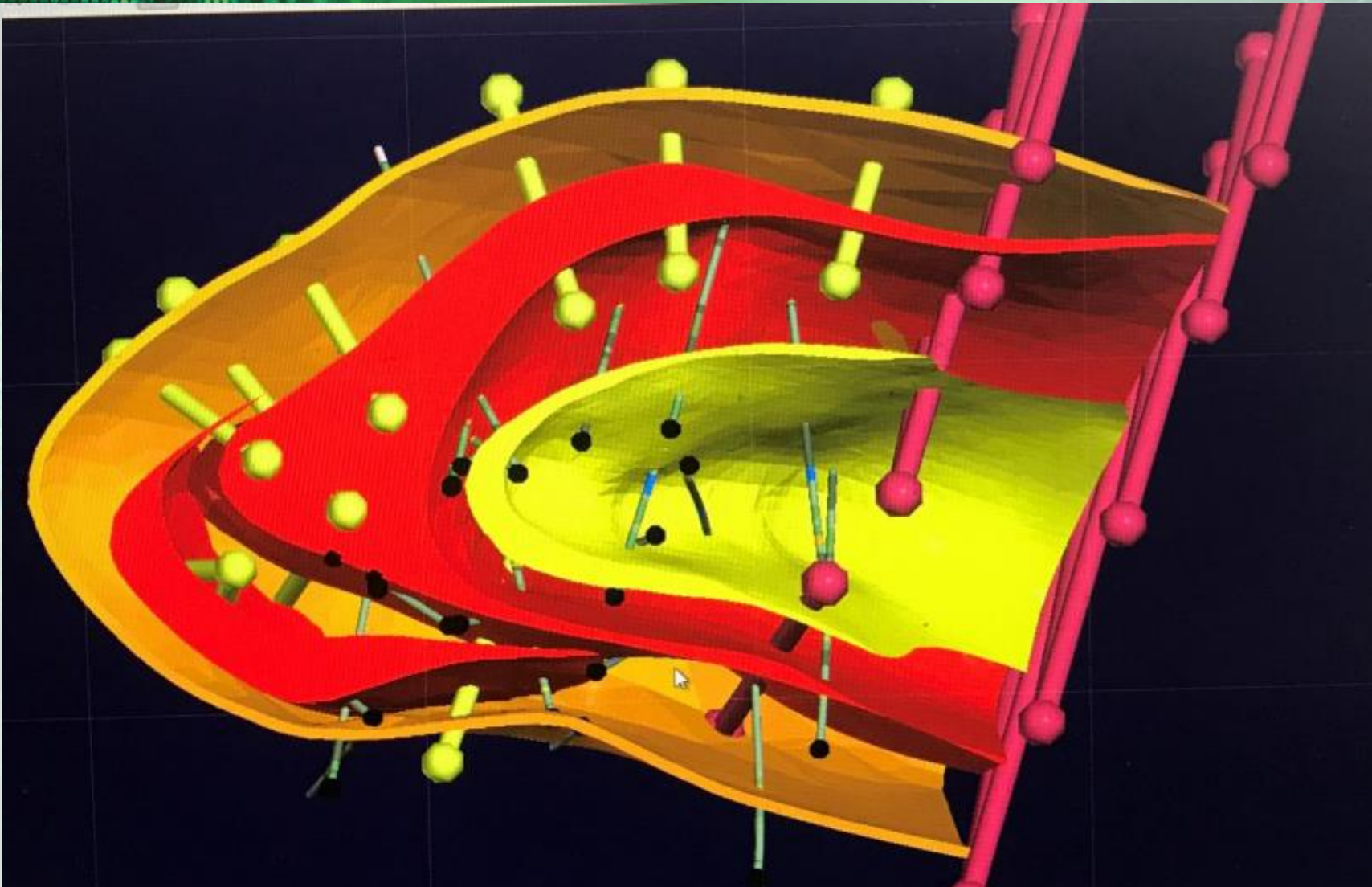
Every drill hole intersected with Graphite.





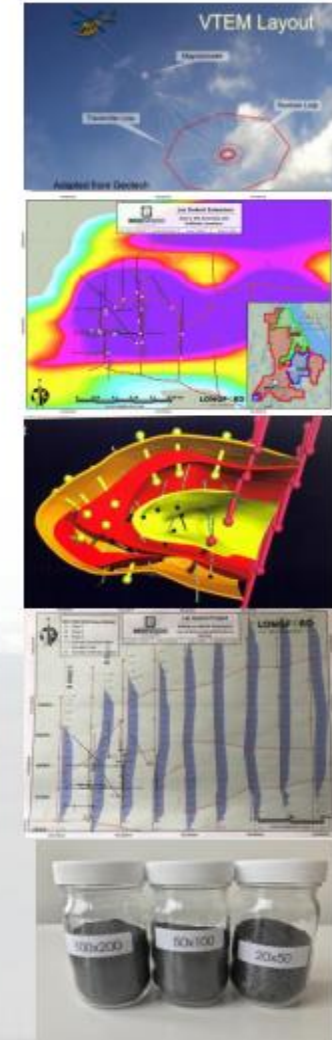
ALL 44 DRILL
HOLES HAVE
INTERSECTED
GRAPHITE

3D MODEL



HISTORY OF WORK COMPLETED ON PROPERTY

- 2002** Heli Survey
- 2014** Air - Borne Geophysical Survey - Identified several large zones of conductivity
- 2015** Surveys were followed up with ground geophysics
- 2017** 3 drill programs completed for 27 holes and 4006m drilled
- 2018** 3D model created from the previous drill programs
Mise-A-La-Masse geophysical survey completed
Metallurgical testing completed. - excellent results
4th Drill program completed for 17 holes and 2084m drilled
3 large outcrops discovered
- 2019** 43-101 Resource Estimate Completed



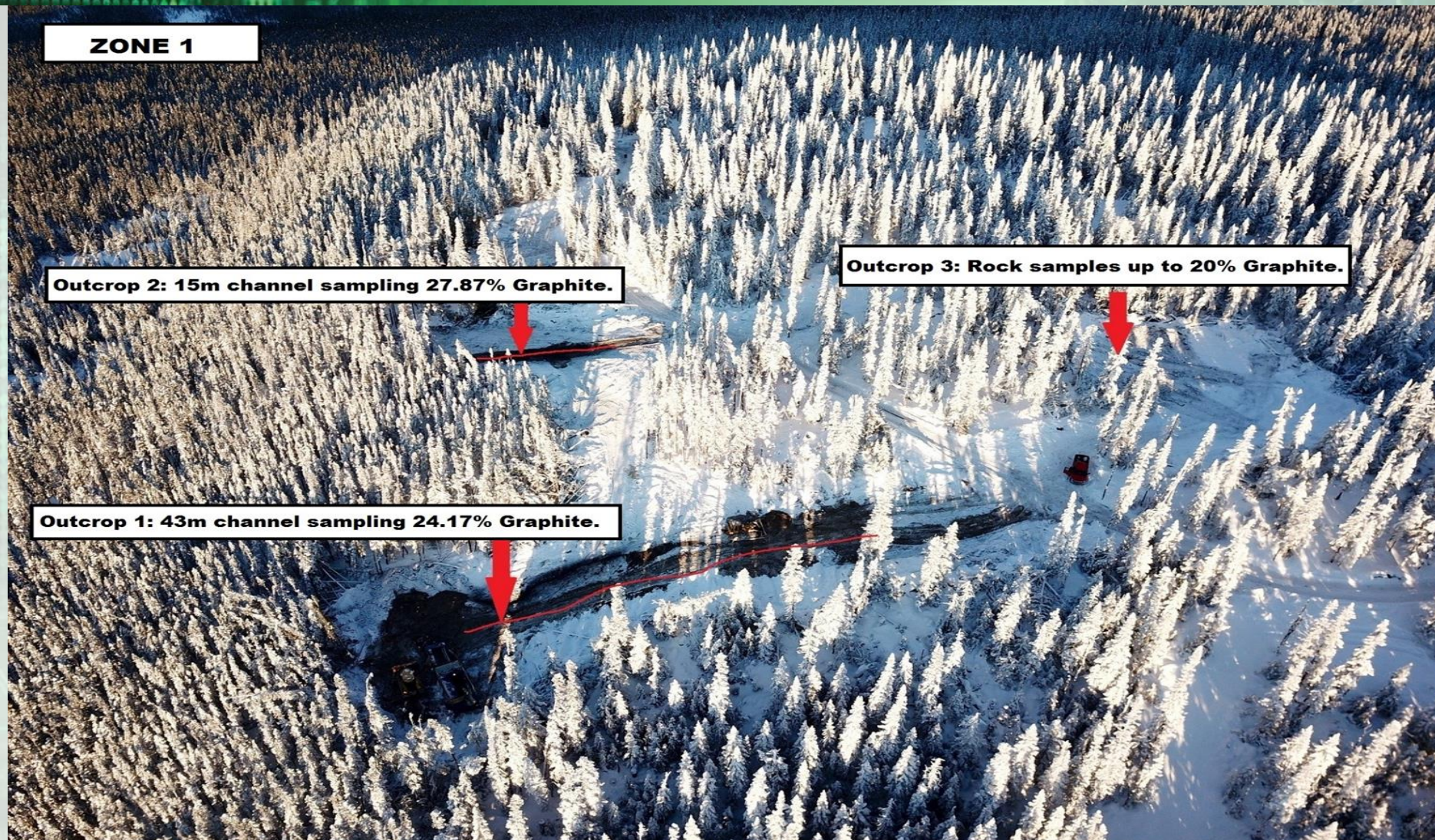
AERIAL VIEW OF HOLES DRILLED

All 44 drill holes
have intersected
graphite to date

Lac Gueret

OUTCROPS

ZONE 1



ZONE 1

Zone 1
Outcrop 1
Open on either side

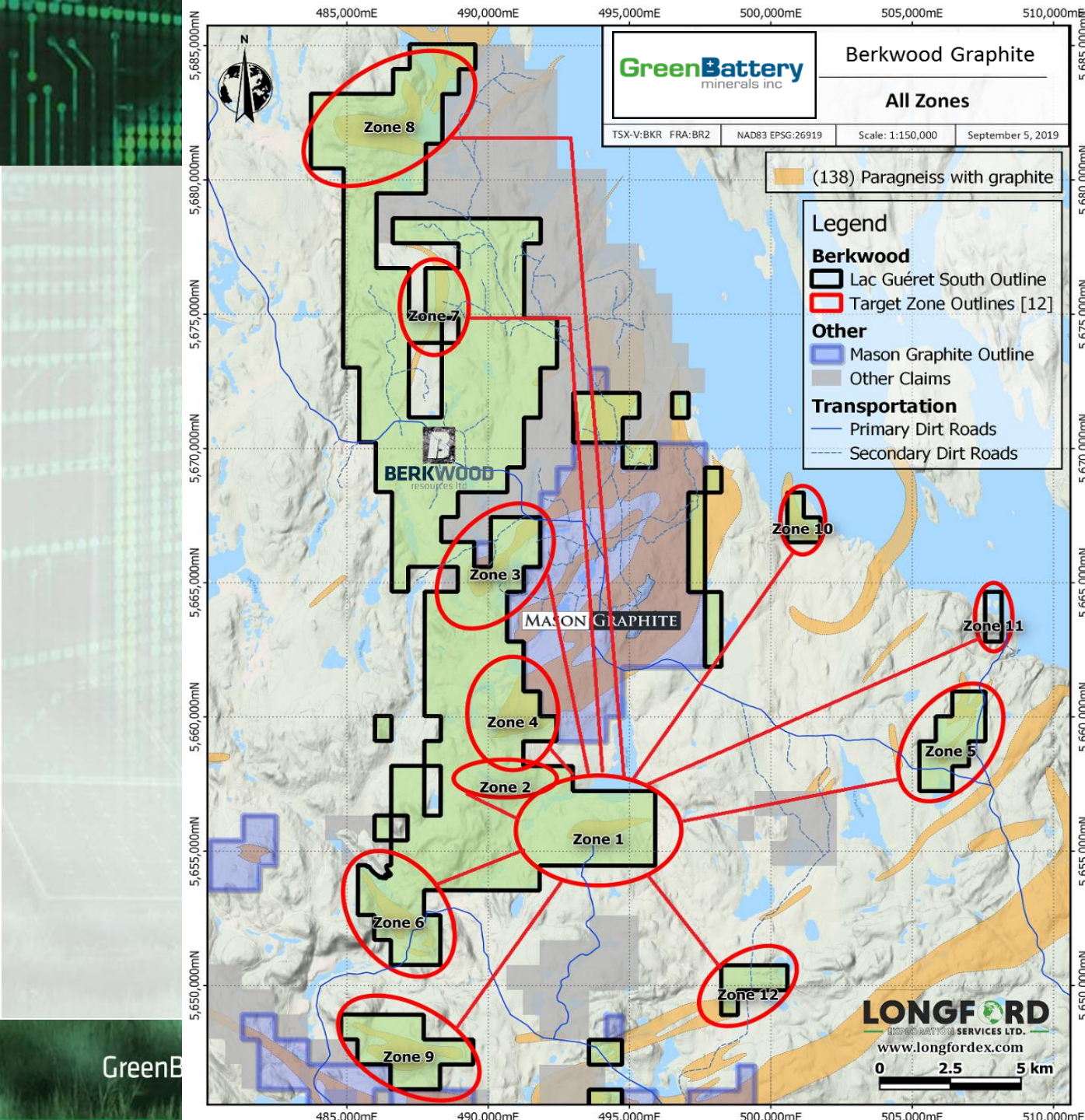


Ryan walking on a road of graphite.

Zone 1
Outcrop 2
Open on either side



Graphite at Surface.

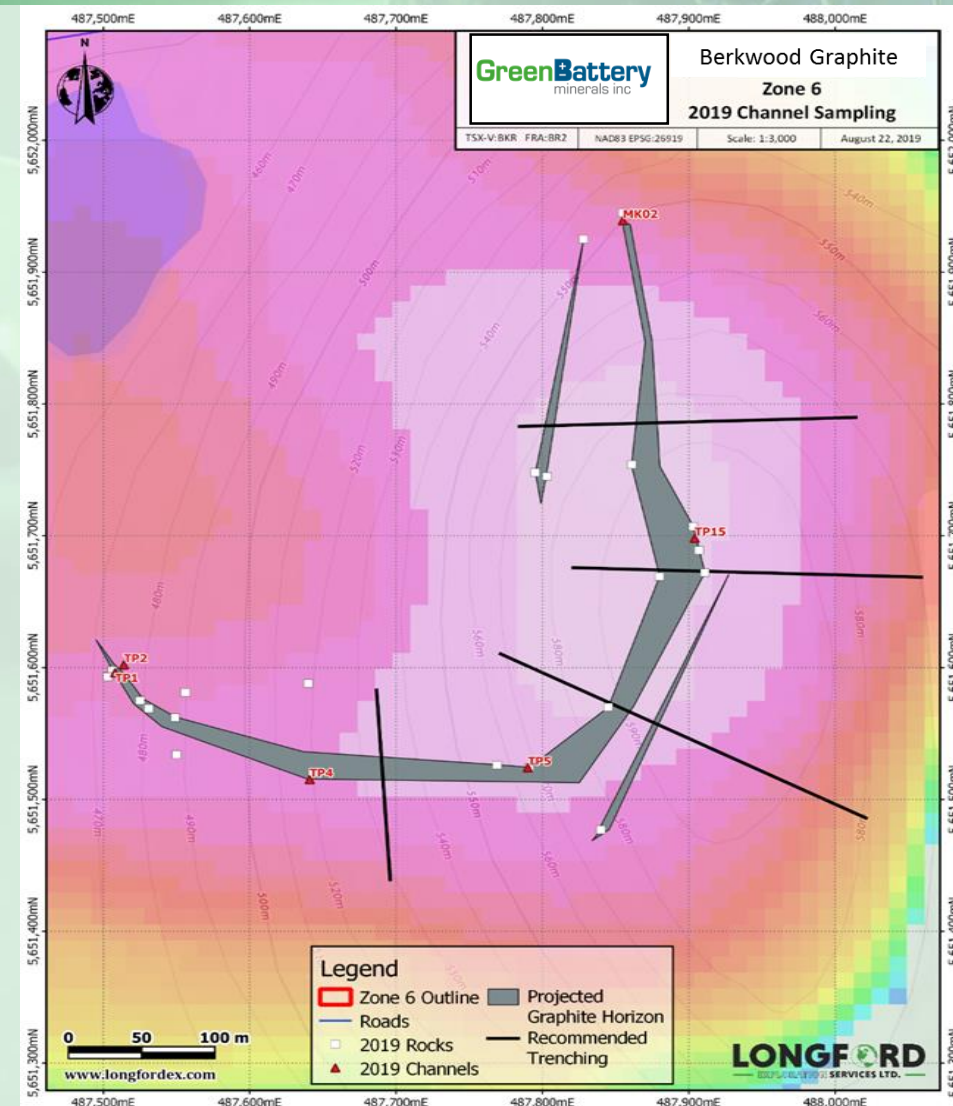
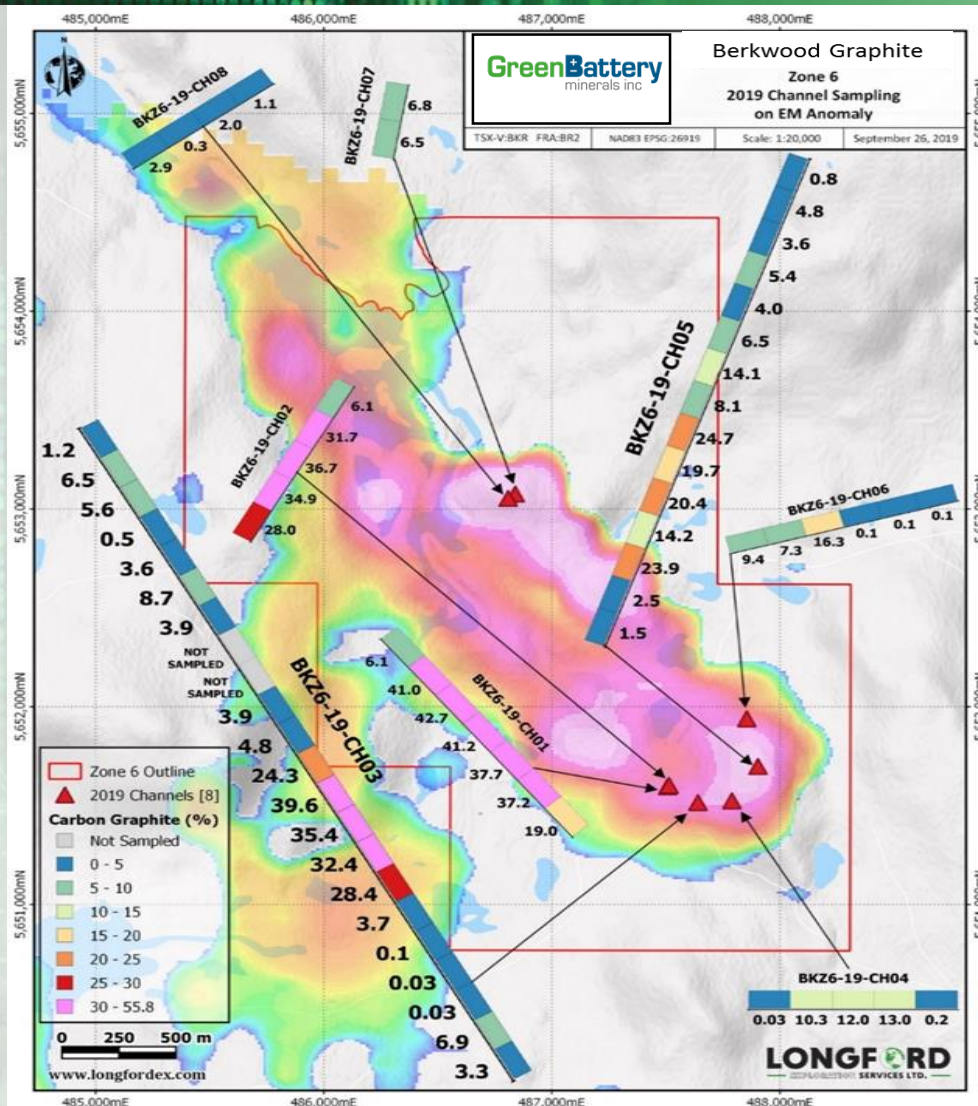


Numerous outcrops
throughout Green Battery
Minerals Inc. 's claims.

ZONE 6 OUTCROPS



ZONE 6 OUTCROPS



ZONE 6

ZONE 6



ADDING VALUE TO GRAPHITE

(Coated Spherical Graphite)

By adding two process to the end product of Nature Large Flake Graphite, the value can be increased greatly. This end product is what is used in the Anode Part of LiB. The back-bone of the EV, storage and future needs batteries.

Price of Nature Large Flake Graphite: \$2,000 /ton*

Price of Sphericalized Nature Large Flake Graphite: \$3,000/ton**

Price of coated Sphericalized Nature Large Flake Graphite: \$7,500/ton**

We want to build a plan to purify our graphite, sphericalized it and coat it.

*(Roskill : <https://www.mining.com/spherical-graphite-producers-impacted-by-low-demand/>)

** (Roskill: <https://roskill.com/news/graphite-haida-new-energy-material-to-begin-coated-spherical-graphite-production/>)

** Roskill: The average value of Chinese exports of mostly uncoated spherical graphite was US\$3,152/t in 2019, but China's much smaller imports of mostly coated spherical graphite was US\$7,157/t, although prices may reach in excess of US\$20,000/t with some coatings.

6 month Plan.

Prove out batteries

Bulk Sample

Drill zone 6

2 year Plan

Offtake agreements

Production

GreenBattery minerals inc

TSX-V: GEM | FSE: BK2P | WKN: A2QENP | OTC: CZSVF

Reduce | Reuse | Recharge



PO Box 48362 BENTALL, **Vancouver** BC V7X 1A1
Phone: (604) 343-7740

2200 – 1250 Rene Levesque Blvd. **Montreal** QC H3B 4W8
Phone: (438) 469-0705